



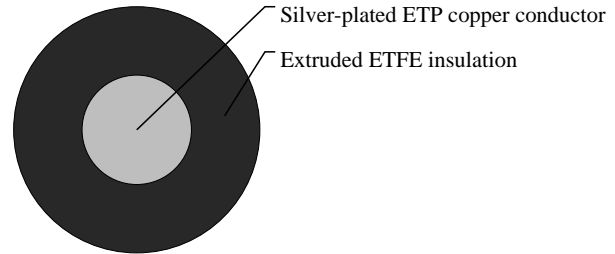
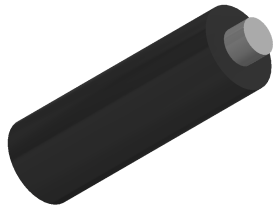
Caledonian

Military Cables

www.caledonian-cables.com

marketing@caledonian-cables.com

MIL-W-81822/13 Type A 1C28AWG



APPLICATIONS

These extruded ETFE (polyvinylidene fluoride) insulated single-core MIL-W-81822/13 cables are used for aerospace and other applications where light weight, tight jacket diameter tolerances and mechanical toughness are required. ETFE insulation also provides exceptional resistance to radiation and chemicals.

VOLTAGE RATING

300V

CABLE CONSTRUCTION

Conductor: Silver-plated ETP copper

Insulation: Extruded ETFE

COLOUR CODE

MIIL-STD-104(See page 65)

PHYSICAL AND THERMAL PROPERTIES

Temperature Range: -55°C to 150°C

DIMENSION AND PARAMETERS

| AWG Size | Conductor Stranding | Conductor Diameter | Conductor Diameter | Overall Diameter (min.) | Overall Diameter (min.) | Overall Diameter (max.) | Overall Diameter (max.) | Approx. Weight | Max. Resistance at 20°C |
|----------|---------------------|--------------------|--------------------|-------------------------|-------------------------|-------------------------|-------------------------|----------------|-------------------------|
| | | in | mm | in | mm | in | mm | LBS/MFT | OHMS/MFT |
| 28 | Solid | 0.0126 | 0.32 | 0.025 | 0.635 | 0.028 | 0.711 | 0.8 | 68 |